

# Brighton Street Path Construction Progresses

In mid-October, David Chase took pictures of the new paved path the Massachusetts Highway Department is building between Alewife Station and Brighton Street, Belmont.

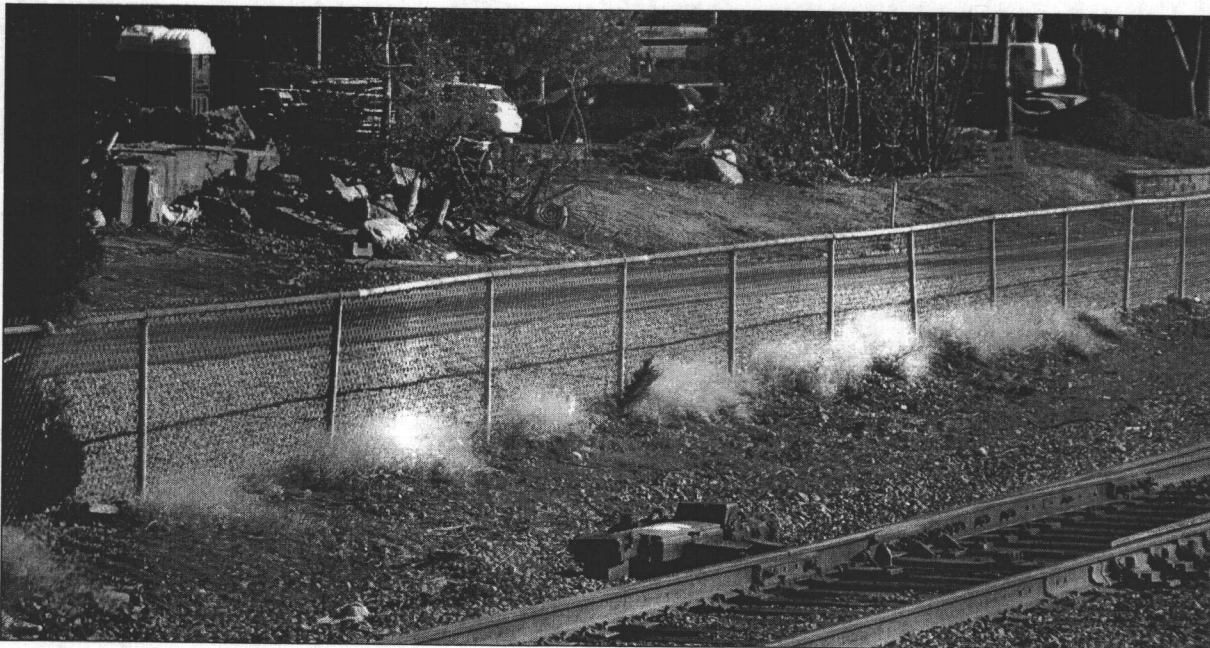
The path runs alongside the Alewife Reservation for much of its length before joining land adjacent to the commuter rail tracks. The photo at right depicts the Alewife Reservation segment: below, the path near Brighton Street.

The target date for completing the entire project—including a new bridge over a culvert at Alewife—is May, 2012.



DAVID CHASE

The newly paved path along the Alewife Reservation.



DAVID CHASE

A view across the tracks at Brighton Street